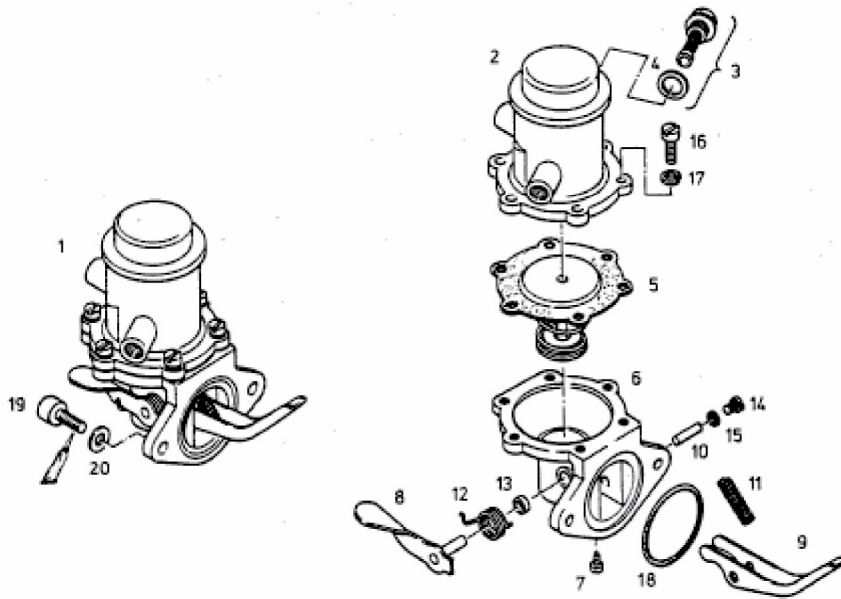


12-8120

**D0824 E701**

Engine number:

Design group: **120/0 fuel system**Sales group/PET/PAT: **51.#0150-0574 / 02.1997 / 29.1999****fuel pump with components**

Item	Item number	Volume	ME	Name/comment	PET	PAT
1	51.12101-7047	1	Item	fuel pump assembly		
2	81.12103-0012	1	Item	cover		
3	81.12101-6014	1	S	Fuel system repair kit fuel pump		
4	81.96601-0285	1	Item	seal asbestos-free		
5	81.12114-0002	1	Item	diaphragm		
6	51.12101-7134	1	Item	fuel pump with assembly female thread		
7	81.90101-0038	1	Item	pan-head screw M4X4X2-5.8-ZN		
8	81.12120-0001	1	Item	lever		
9	81.12120-0002	1	Item	pump lever		
10	81.91001-0439	1	Item	axle		
11	81.97602-0195	1	Item	pressure spring		
12	81.97610-0191	1	Item	return spring		
13	81.12112-0003	1	Item	washer		
14	81.90310-0314	1	Item	pan-head screw M7X0,75X5,5		
15	81.98701-0032	1	Item	seal asbestos-free		
16	06.04252-1108	6	Item	cylinder screw M5X12-4.8-A3C		
17	06.16739-0010	6	Item	spring washer A5-MAN183-B1		
-	81.12101-6013	1	S	Fuel system repair kit asbestos-free fuel pump		
-	-	*		comprising: fig. 3 - 5; 15 - 17		
18	06.56332-2167	1	Item	toric seal 32X2,5B-ACM1-60		
19	06.02192-0306	2	Item	cylinder screw M6X18-8.8-A2C		
-	04.10160-9164	NB	Item	adhesive 50 ML bottle		
-	-	*		see group 999/0		
20	51.90710-0288	2	Item	washer 6,4X14X1,6-9SMNPB28K		